

Neenah R-4990-EA Airport

Series

R-4990-EA

Cut Sheet

17" Wide Airport Bolted

17" Wide NEENAH Airport Bolted Extra Heavy Duty Trench Drain Grates and Frames

Product ID: R-4990-EA



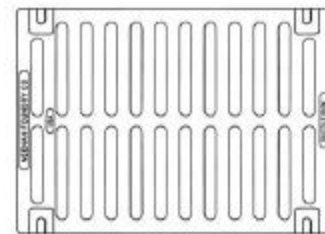
17" Wide Airport Neenah R-4990-EA Series Trench Grate and Frame

Frame is included / Bolted assembly - Please call if only Grate is needed.

Catalog No.	A	B	C	Grate Matl.
R-4990-AA	8	2	6	Gray Iron
R-4990-BA	10	2	8	Gray Iron
R-4990-CA	12	2	10	Ductile Iron
R-4990-DA **	14	2	12	Ductile Iron
R-4990-EA *	17	2	15	Ductile Iron
R-4990-FA *	20	2	18	Ductile Iron
R-4990-HA *	26	2	24	Ductile Iron
R-4990-KA2 *	34	2	31	Ductile Iron
R-4990-OA *	51	2	48	Ductile Iron

* Type D solid cover available.

** Type C grate available.



TYPE "A"
GRATE OPENINGS

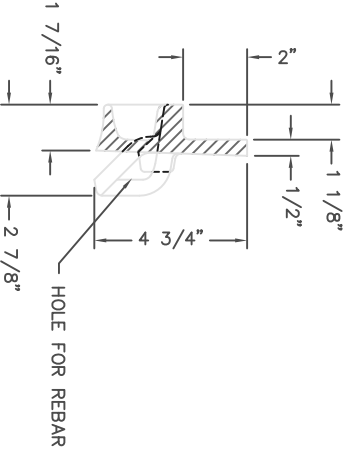
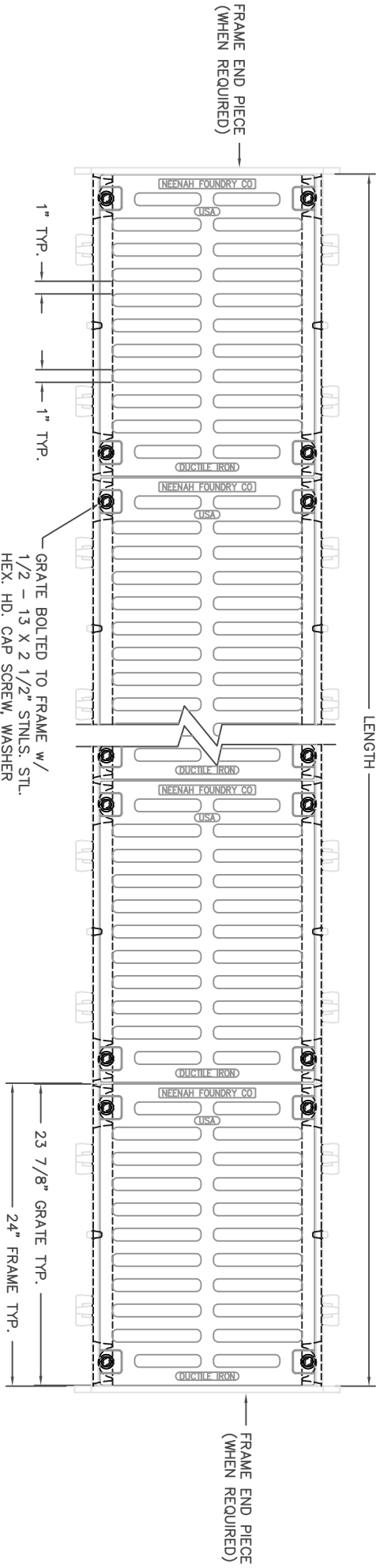
These trench drains are capable of supporting the heavy wheel loads of today's commercial environments. Grates are bolted to gray iron frames.

Suitable for aircraft loading per FAA Advisory Circular AC150/5320-6D.

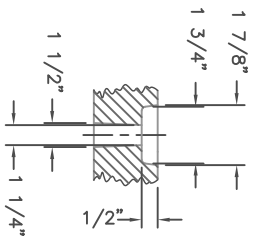
Gray iron furnished per ASTM-A48 Class 35B.

Ductile Iron furnished per ASTM A536 Grade 80-55-06.

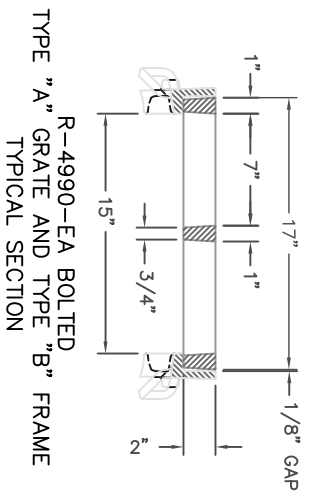




FRAME SECTION VIEW
 SCALE 1:4



TYPICAL BOLT SLOT DETAIL
 SCALE 1:4



NOTE: MEETS MINIMUM 100,000 LOAD REQUIREMENTS PER FAA AC150/5320-60 APPENDIX 3.2.d.1. (ACTUAL PROOF LOAD IS OVER 200,000-POUND ON A 9" X 9" CONTACT AREA.)
 COMP. NO'S: SIDE FRAME 4999-2400, END FRAME 4990-3117, GRATE 4999-0017
 MATERIAL: GRATES - CAST DUCTILE IRON ASTM A536, 55 + KSI YIELD
 FRAMES - CAST GRAY IRON ASTM A48, CLASS 35B
 FINISH: NO PAINT

DR.	E. NIVER	SCALE	TITLE
CH.		1/8"=1"	R-4990-EA DOUBLE BOLT STYLE TYPE "A" GRATE w/ TYPE "B" FRAME
APP.		DMT CHK.	NEENAH FOUNDRY COMPANY NEENAH WISCONSIN 54956
DATE	03-12-2012		NF-

R-4990 Airport, Port & Heavy Industrial Series

BOLTED TRENCH FOR EXTRA HEAVY DUTY APPLICATIONS

These trench drains are capable of supporting the heavy wheel loads of today's commercial environments. For larger trench widths or greater loading requirements, please contact our Product Engineering Department.

Grates are bolted to gray iron frames.

For suggested forming procedures, see page 285.

Suitable for aircraft loading per FAA Advisory Circular AC150/5320-6D.

Catalog No.	A	B	C	Grate Matl.
R-4990-AA	8	2	6	Gray Iron
R-4990-BA	10	2	8	Gray Iron
R-4990-CA	12	2	10	Ductile Iron
R-4990-DA * **	14	2	12	Ductile Iron
R-4990-EA *	17	2	15	Ductile Iron
R-4990-FA *	20	2	18	Ductile Iron
R-4990-HA *	26	2	24	Ductile Iron
R-4990-KA2 *	34	2	31	Ductile Iron
R-4990-OA *	51	2	48	Ductile Iron

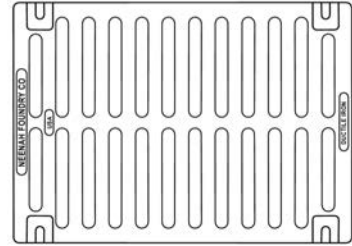
* Type D solid cover available.

** Type C grate available.

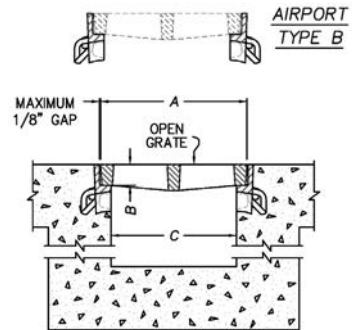
Gray iron furnished per ASTM-A48 Class 35B.

Ductile Iron furnished per ASTM A536 Grade 80-55-06.

These grates are also available with superior duty R-4993 & R-4994 frames as shown on page 287.



TYPE 'A'
GRATE OPENINGS



Supplied By:

**TRENCHDRAIN
SUPPLY**

877-903-7246

www.trenchdrainsupply.com